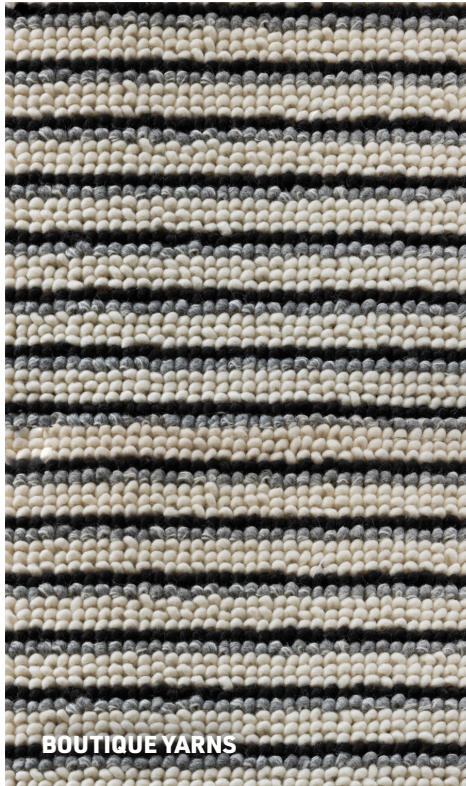


MAKER GUIDE *of* TECHNIQUES & TERMS

DELOSTM
Custom Rugs & Carpets

AMERICAN MADE



JOURNEY MADE



DISCOVER DELOS

Where Modern Technology Meets Artisan Craft



Custom Design: Alamere

THE DELOS STORY

Delos blends an expansive fiber offering with boutique yarn artistry to create custom textures and styles in virtually any shape or size. Delos project managers and designers provide value-engineered guidance, developing concepts from sketches, samples, or digital files to meet project goals.

SIGNATURE STATEMENT RUGS

Delos is known for intricate custom art rugs that balance beauty, durability, and the ability to meet targeted price points and timelines, with a design team that simplifies the process for clients.

VALUE ENGINEERING

Delos creates rugs with varying complexity, adjusting tufting time and color count to suit each project. High end, multi-colored rugs make a statement in prominent spaces, while value-engineered versions complement the room at lower cost.

PRODUCTION OPTIONS

American Made and Journey Made rugs reflect Delos' commitment to excellence, with pricing and production guided by fibers, pattern complexity, tufting time, and delivery needs. Whether made in the U.S. or India, nearly 85% of finishing is done by hand, ensuring each rug showcases the artistry and craftsmanship that define Delos.

“A CUSTOM RUG IS NOT JUST
A FOUNDATION. IT’S THE
BEGINNING OF THE STORY.”

DELOS



*Wildwood Design Series
Design: Trillium, Color: Carbernet*

DELOS MAKES CUSTOM EASY

Delos unites with designers to champion their vision by creating beautiful custom rugs that elevate spaces grand and small.

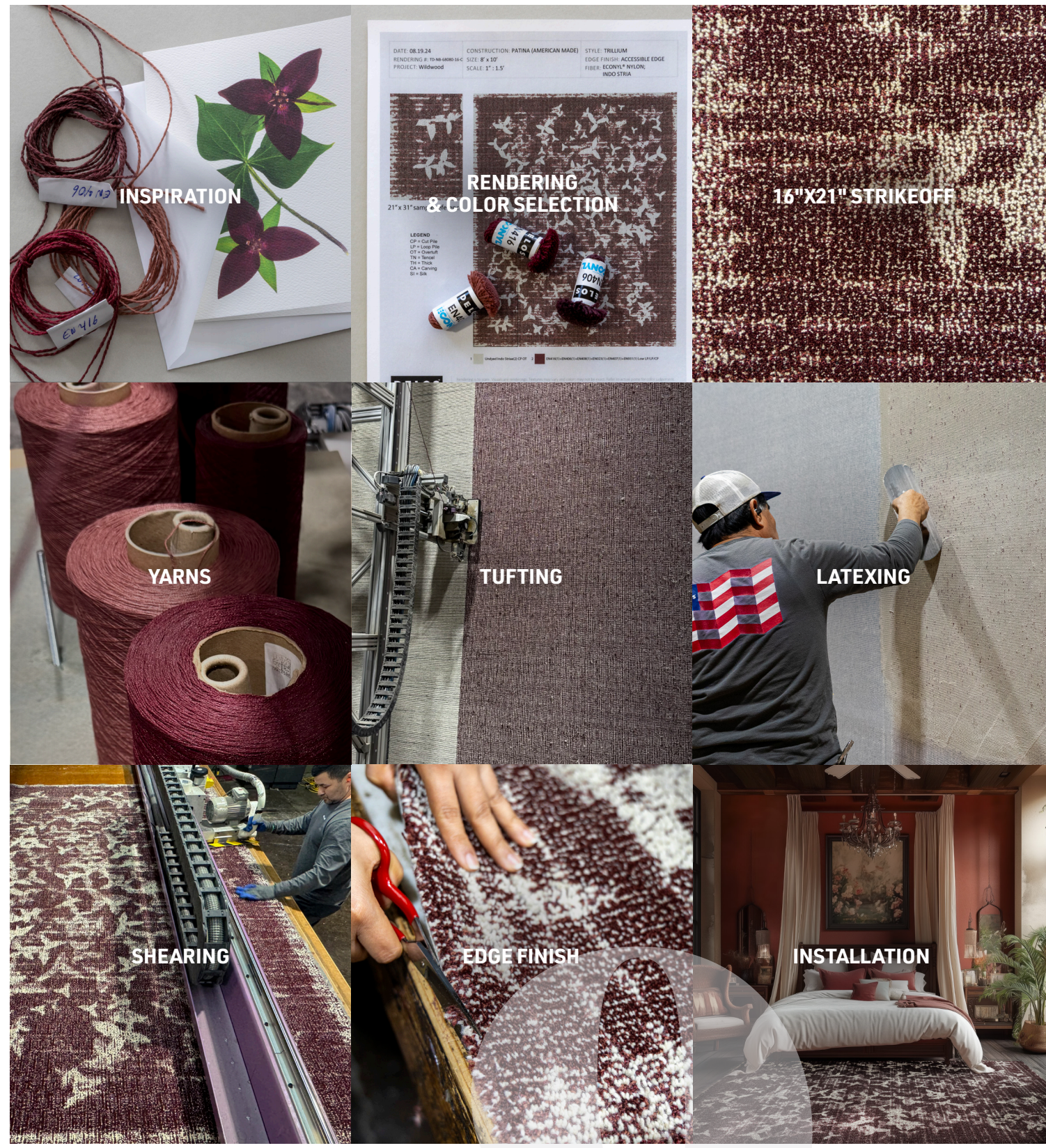
The Delos Specialty. Delos is known for its expansive fiber offering and its expertise in crafting exclusive textures through the artistic blending of yarns. From patinas and painterly effects to modern styles in unlimited shapes and sizes, Delos tufts with curated boutique yarns that are both eco-friendly and beautiful.

Value Engineering. A single call to a Delos project manager initiates a virtual consultation with a Delos designer, who provides value engineering to align budget, style, delivery, and installation requirements.

Delos Applauds Creativity. Designs can begin with client sketches, fabric samples, moodboards, digital files, or by recoloring an existing Delos

rug design. The Delos design team adapts its level of involvement to each client's needs, offering expertise in color, construction, and yarn selection.

Two Manufacturing Facilities. Delos tufts in the U.S. and at its partner facility in India. Both share a common thread—nearly 85% of finishing is completed by hand. U.S. production combines state-of-the-art robotic tufting with meticulous hand finishing, including latexing, shearing, carving, and edge work resulting in *AMERICAN MADE EXCELLENCE*. Indian manufacturing honors Master Artisans who take pride in a 520-year-old handmade tradition, resulting in a distinctive legacy.



THE U.S. MAKER PROCESS UNFOLDS IN 9 STEPS

SIGNATURE STATEMENT RUGS


Delos is known for intricate custom art carpets that deliver both beauty and durability. Delos can also design to targeted price points and timelines. The design team partners with customers to simplify the process.

For painterly texture, Delos employs overtufting, in which a background is tufted before or after the pattern is broken up by the elements and add depth. The result complements the setting rather than overpowering it.

RENDERING
DATE: 10.03.23
PROJECT: SD-N-69786-2-A

CONSTRUCTION: ETCHED
SIZE: 5'-3" x 7'-3"
SCALE: 1" : 1'

STYLE: CUSTOM
EDGE FINISH: SELF HEM
FIBER: ECONYL® NYLON



21' x 31' sample reference

LEGEND
CP = Cut Pile
LP = Loop Pile
OT = Overtuft
TN = Tencel
TH = Thick
CA = Carving
SI = Silk

1 EN0201(S) + EN0901(C) C/P/LP

2 EN0202(S) + EN0906(C) C/P/LP

3 EN1005(S) + EN1011(C) C/P/LP

4 EN1005(S) + EN1011(C) C/P/LP

5 EN1005(S) + EN1011(C) C/P/LP

6 EN1274(S) + EN0802(C) C/P/LP

7 EN02702(S) + EN0804(C) C/P/LP

8 EN02702(S) + EN0802(C) C/P/LP

9 EN0201 HEM LP Base

DELOS

TheDelosCompany.com
info@TheDelosCompany.com

Rendering is to scale. Visuals are renderings. Textures may vary and colors may not be exact. Refer to actual points for color judgement. Please check off the following before signing rendering: Size [] Colors [] Textures [] Signature constitutes approval of design, repeat, scale, color and size.

CLIENT SIGNATURE OF APPROVAL: _____ DATE: _____

Customer represents and warrants that it has authority to use the design as contemplated under this agreement and that such use does not and will not violate any copyright held by third parties. Customer hereby indemnifies Delos, Inc. also The Delos Company against any loss that may be incurred by reason of any infringement or violation or alleged violation of any copyright. Delos designs are copyright of Delos, Inc. Client provided designs are property of client. ©2020 All rights reserved.

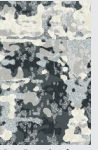
All Hand Crafted Rugs are Subject to Size and Dye Lot Variations up to 5.5%

Heartland Collection: Etched Mirror

RENDERING
DATE: 11.01.23
PROJECT: TD-N-69995-1-A

CONSTRUCTION: HEARTLAND
SIZE: 11'6" x 12'
SCALE: 1" : 2'

STYLE: ETCHED MIRROR
EDGE FINISH: SELF HEM
FIBER: ECONYL® NYLON



21' x 31' sample reference

LEGEND
CP = Cut Pile
LP = Loop Pile
OT = Overtuft
TN = Tencel
TH = Thick
CA = Carving
SI = Silk

1 EN0201(S) + EN02701(H) EN0302(C) C/P OT

2 EN0302(S) + EN0301(C) C/P OT

3 EN0201(S) + EN0301(C) C/P OT

4 EN0201(S) + EN0301(C) C/P OT

5 EN0201(S) + EN0301(C) C/P OT

6 EN0201(S) + EN0301(C) C/P OT

DELOS

TheDelosCompany.com
info@TheDelosCompany.com

Rendering is to scale. Visuals are renderings. Textures may vary and colors may not be exact. Refer to actual points for color judgement. Please check off the following before signing rendering: Size [] Colors [] Textures [] Signature constitutes approval of design, repeat, scale, color and size.

CLIENT SIGNATURE OF APPROVAL: _____ DATE: _____

Customer represents and warrants that it has authority to use the design as contemplated under this agreement and that such use does not and will not violate any copyright held by third parties. Customer hereby indemnifies Delos, Inc. also The Delos Company against any loss that may be incurred by reason of any infringement or violation or alleged violation of any copyright. Delos designs are copyright of Delos, Inc. Client provided designs are property of client. ©2020 All rights reserved.


All Hand Crafted Rugs are Subject to Size and Dye Lot Variations up to 5.5%

16"x21" strikeoff

RENDERING
DATE: 04.18.22
PROJECT: S-W-68019-6-C

CONSTRUCTION: AMERICAN TUFTED DELUXE
SIZE: 108" x 240"
SCALE: 1" : 3.5'

STYLE: CUSTOM
EDGE FINISH: SELF HEM
FIBER: 100% NEW ZEALAND WOOL



21' x 31' sample reference

LEGEND
CP = Cut Pile
LP = Loop Pile
OT = Overtuft
TN = Tencel
TH = Thick
CA = Carving
SI = Silk

1 PR1(H) + EN1274(H) + F2(C) C/P/LP

2 GR2(H) + F2(C) C/P/LP

3 F2(C) + EN0802(H) C/P/LP

4 EN0802(H) + EN1011(C) C/P/LP

5 EN1020(H) + EN1011(C) C/P/LP

6 EN1020(H) + EN1011(C) C/P/LP

7 GR1(H) + EN1274(H) + F2(C) C/P/LP

8 EN1020(H) + EN1011(C) C/P/LP

9 EN1020(H) + EN1011(C) C/P/LP

10 EN1020(H) + EN1011(C) C/P/LP

11 PR1(H) + EN1274(H) + F2(C) C/P/LP

12 EN1011 + EN0201 LP Overtuft

DELOS

TheDelosCompany.com
info@TheDelosCompany.com

Rendering is to scale. Visuals are renderings. Textures may vary and colors may not be exact. Refer to actual points for color judgement. Please check off the following before signing rendering: Size [] Colors [] Textures [] Signature constitutes approval of design, repeat, scale, color and size.

CLIENT SIGNATURE OF APPROVAL: _____ DATE: _____

Customer represents and warrants that it has authority to use the design as contemplated under this agreement and that such use does not and will not violate any copyright held by third parties. Customer hereby indemnifies Delos, Inc. also The Delos Company against any loss that may be incurred by reason of any infringement or violation or alleged violation of any copyright. Delos designs are copyright of Delos, Inc. Client provided designs are property of client. ©2020 All rights reserved.


All Hand Crafted Rugs are Subject to Size and Dye Lot Variations up to 5.5%

Heartland Collection: Terra Firma

DATE: 05.08.24
RENDERING: S-TW-NW-88073-1-A
PROJECT: RM

CONSTRUCTION: HEARTLAND (AMERICAN MADE)
SIZE: 7' x 14'
SCALE: 1" : 2'

STYLE: TERRA FIRMA (MODIFIED)
EDGE FINISH: ACCESSIBLE EDGE
FIBER: ECONYL® NYLON,
CLASSIC WOOL



21' x 31' sample reference

LEGEND
CP = Cut Pile
LP = Loop Pile
OT = Overtuft
TN = Tencel
TH = Thick
CA = Carving
SI = Silk

1 EN0201(S) + EN0302(S) EN0301(C) C/P

2 EN0301(S) + EN0302(C) C/P

3 EN0301(S) + EN0302(C) C/P

4 EN0301(S) + EN0302(C) C/P

5 EN0301(S) + EN0302(C) C/P

6 EN0301(S) + EN0302(C) C/P

7 EN0301(S) + EN0302(C) C/P

DELOS

TheDelosCompany.com
info@TheDelosCompany.com

Rendering is to scale. Visuals are renderings. Textures may vary and colors may not be exact. Refer to actual points for color judgement. Please check off the following before signing rendering: Size [] Colors [] Textures [] Signature constitutes approval of design, repeat, scale, color and size.

CLIENT SIGNATURE OF APPROVAL: _____ DATE: _____

Customer represents and warrants that it has authority to use the design as contemplated under this agreement and that such use does not and will not violate any copyright held by third parties. Customer hereby indemnifies Delos, Inc. also The Delos Company against any loss that may be incurred by reason of any infringement or violation or alleged violation of any copyright. Delos designs are copyright of Delos, Inc. Client provided designs are property of client. ©2020 All rights reserved.

All Hand Crafted Rugs are Subject to Size and Dye Lot Variations up to 5.5%

16"x21" strikeoff

TheDelosCompany.com | 7

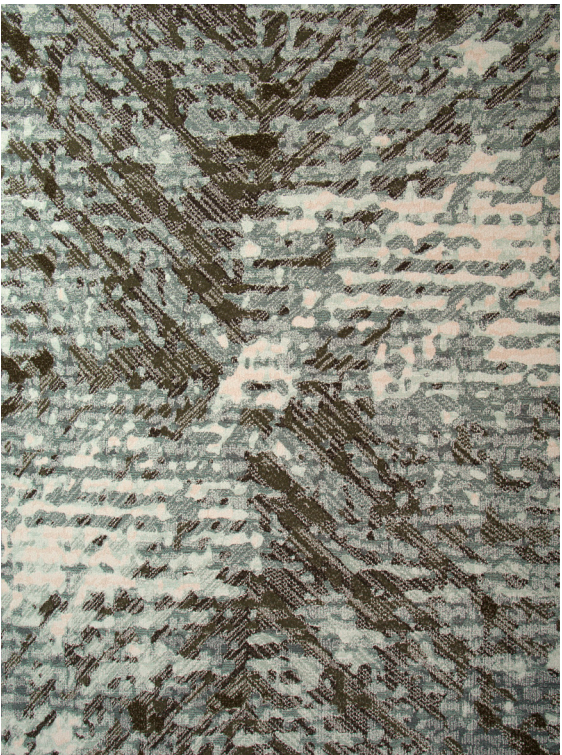
VALUE ENGINEERING

Statement Rugs. Complementary Rugs. For Any Space or Budget.

Like the popular *Heartland Collection* rugs shown below, Delos offers high-end art rugs tufted in numerous colors—ideal for statement areas where the rug design is meant to dominate the space. For areas where the rug should complement rather than compete, Delos provides value-engineered versions with fewer colors, maintaining visual appeal while reducing complexity, tufting time, and overall cost.



Fields Of Glory, 9 colors \$\$\$\$



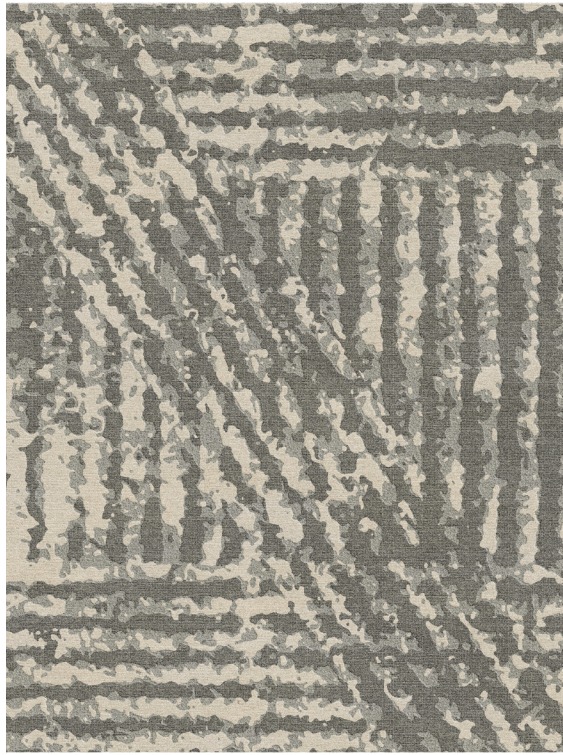
Heritage Dreams, 10 colors \$\$\$\$



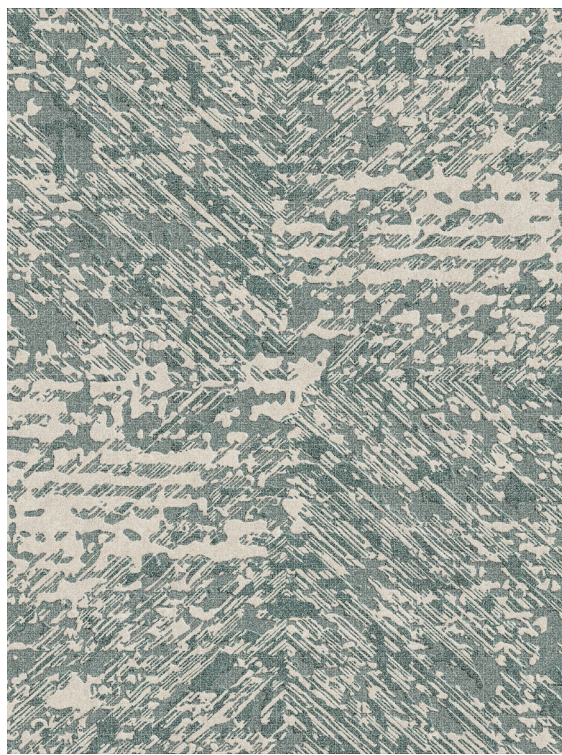
Summer Storm, 12 colors \$\$\$\$



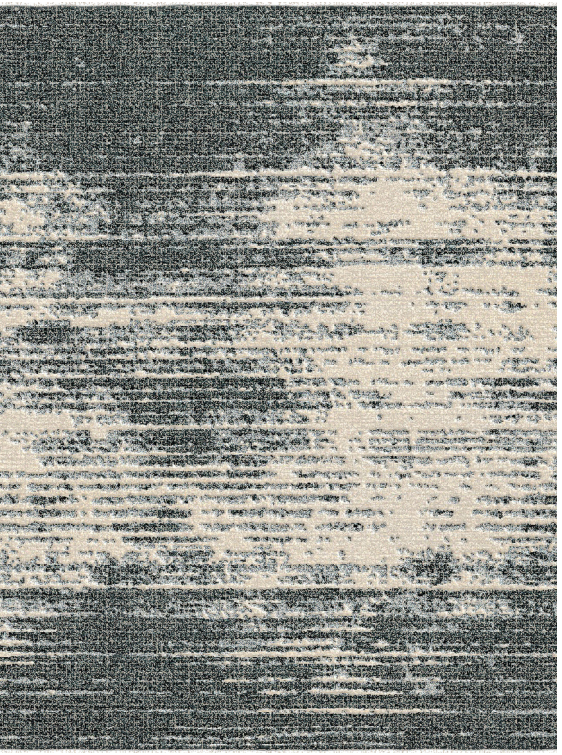
Weathered Ridge, 10 colors \$\$\$\$



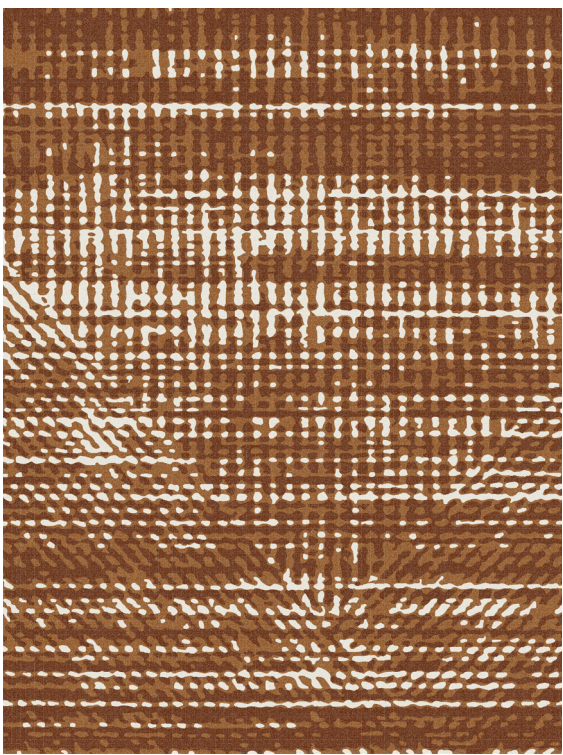
Fields Of Glory, 4 colors \$\$



Heritage Dreams, 4 colors \$\$



Summer Storm, 4 colors \$\$



Weathered Ridge, 4 colors \$\$



ONE PRODUCTION STORY.



American Made option

American Made and Journey Made rugs are crafted with the same commitment to excellence, yet each brings unique strengths. Pricing is determined by the specified fibers, budget, tufting time, pattern complexity, and delivery schedule. These factors determine whether American Made or Journey Made is the best solution. When budgets tighten at the last minute, or schedules become more rushed midstream, Delos can shift facilities to meet demand.

AMERICAN MADE

Strengths Leverages boutique yarns and advanced tufting robotics to create rich, dimensional textures.

Precision & Craftsmanship Robotic tufting with hand-finished detail.

Sustainable Materials ECONYL® nylon and 100% New Zealand wool.

Speed 6-8 weeks from release to production.

Customization Limitless shapes and oversized dimensions.



TWO BEAUTIFUL RESULTS.

Whether tufted in the U.S. or India, both share a common thread — **nearly 85% of finishing is done by hand**. From latexing and shearing to carving and edge finishing, every rug reflects the artistry and craftsmanship that defines Delos.

JOURNEY MADE

Strengths Known for heirloom quality, excels at intricate patterns, large numbers of accent colors, and detailed hand carving.

Artistry & Craftsmanship Hand tufting, hand knotting, and hand loomed with hand-finished detail.

Sustainable Materials PET and 100% New Zealand wool.

Speed 14-15 weeks from release to production.

Customization Limitless shapes and oversized dimensions.



Journey Made option



6 WAYS TO ADD VALUE

Delos excels in adding distinction through striking aesthetics brought to life through exceptional understanding and innovative techniques—often at no added cost.

1. PATTERN DEVELOPMENT

Delos excels at a wide range of unique rug constructions that allow for exceptional design flexibility and creativity enabling designers to select the perfect construction for optimal price, performance, and refined aesthetics.

2. STRIAE OR STIPPLE

Delos enhances the visual richness of rugs by creating striae or stipple effects, adding depth and dimension in place of flat color. This creates an upscale, sophisticated custom area rug without additional expense.

3. SHEAR ART

By selectively shearing different loop levels, Delos artisans achieve rich textures, dynamic surface quality, and tactile integrity.

4. PATTERN REFINEMENT

Delos showcases a range of artisanal techniques for separating rug colors, including pencil and deep carving as well as varying the cut and loop of adjoining elements for long term pattern clarity.

5. TEXTURAL OVERLAY

Delos uniquely offers the ability to add cut or loop textural overlays on top of layered designs for a tactile, richly dimensional finish—at no extra cost.

6. SHAPE POSSIBILITIES

Delos provides unlimited rug shapes, giving designers effortless versatility for delivering couture-level customization at no additional cost.

“THE BEST ROOMS HAVE
SOMETHING TO SAY ABOUT
THE PEOPLE WHO LIVE IN THEM.”

DAVID HICKS

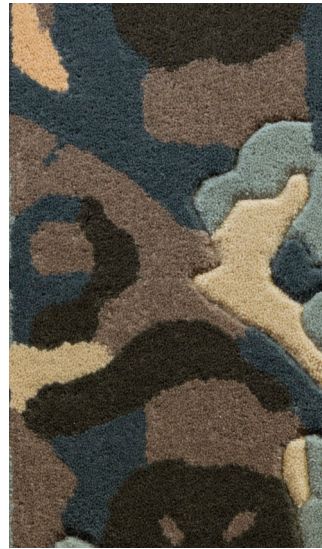
A VALUE-ADD TECHNIQUE

1. PATTERN DEVELOPMENT

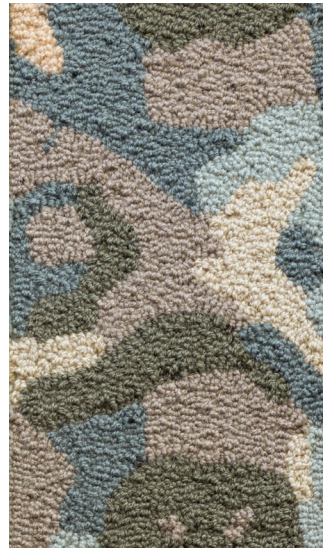
American Made: Traditional Cut and Loop Pattern Techniques



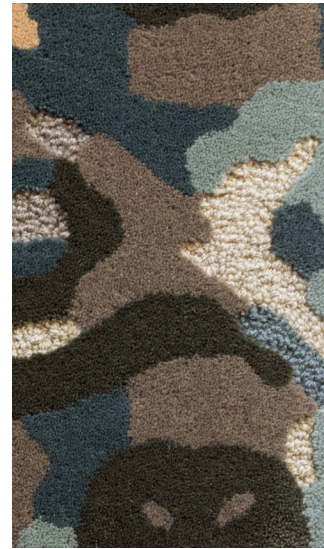
Allover cut pile



Cut pile with carve



Allover loop



Cut and loop

Journey Made: Traditional Cut and Loop Pattern Techniques

The Delos weaving facility in India is SA8000 certified, ensuring socially responsible practices. The facility combines mechanical tufting guns for high density tufted rugs with the time-honored crafts of hand tufting, knotting, and weaving, skills often passed down through generations. Each rug is meticulously hand finished. Persian knot constructions are available upon request.

When a rug project calls for fine detail or numerous colors, Delos Journey Made craftspeople are recognized for their artistry, excelling in intricate patterns, small dye lots, and precise hand carving. They offer limitless design possibilities, including custom shapes and oversized dimensions.



Allover cut pile



Cut pile with carve



Allover loop



Cut and loop

American Made: Overtufted Constructions

Delos is known for the ability to quote projects individually based on: styling, budget, delivery, area of installation, and wear expectation. Delos' U.S. facility is known for using state-of-the-art robotic technology to achieve consistency and speed, with approximately 85% of the finishing completed by hand. Delos creates beautiful textural pattern and depth by mixing varying boutique yarns and applying techniques that have been learned over decades.



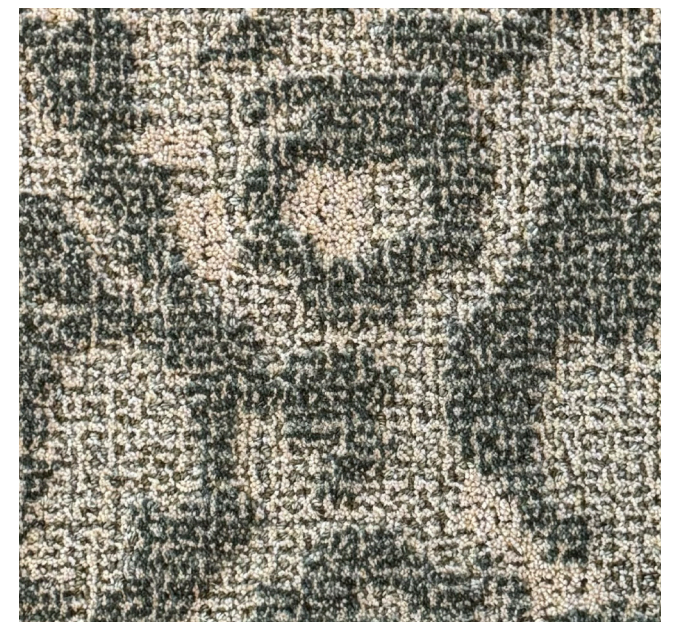
Etched: The pattern is more dominant than dots.



Striated: Offers the ability to choose where dots are placed throughout the design.



Stipple: The pattern is consistently broken up by dots.



Patina: A popular construction that has an antiqued look. (Examples shown on page 17).

A VALUE-ADD TECHNIQUE
ANTIQUED BY DESIGN

**Patina Constructions Achieve the Ideal Balance
of Hand-Crafted Charm and High Performance**



*Wildwood Design Series
Design: Chasm, Colorway: Sandstone*

Patina Construction Options

Patina constructions come to life through an artful interplay of loop fibers that offer both durability and alluring softness. Additionally, patina constructions resist visible vacuum and foot marks, ensuring lasting beauty.



Undyed Classic Wool paired with
Classic Wool (A9+B5+E3)



Undyed indo striae paired with
Classic Wool (A9+B5+E3)



Undyed Classic Wool paired with
ECONYL® nylon (EN203+EN101+EN108)



Undyed indo striae paired with
ECONYL® nylon (EN203+EN101+EN108)*

*This construction was used for the *Wildwood Design Series*.

A VALUE-ADD TECHNIQUE

2. CREATE A STRIAE OR STIPPLE

Striae rug constructions combine yarns in subtle color variations resulting in visual depth and lasting performance. Higher contrast colors make striae (color lengths) more pronounced. The number of yarns that can pass through the tufting needle varies by material. () in the color formulas indicate the number of yarns used.

Blending of Classic New Zealand Wool Yarns Result in a Striae

Three yarns of wool (striae) can fit through the needle at once.



Solid
B5(3)

Dominant with accent yarn
B5(2) + E3(1)

Three colors used equally
A9(1) + B5(1) + E3(1)

Blending New Zealand Wool and ECONYL® Nylon Yarns Creates a Striae

Blending wool with nylon creates more color variance between loop and cut pile.



Tonal two colors
B5(2) + EN101(2)

Three colors*
B5(2) medium + E3(1)
dark+EN108(1) darker

Three colors*
E3(2) + B5(1) dark + EN108(1)
darkest

Delos can thread six ends of ECONYL® nylon yarn through each tufting needle simultaneously. Blending a variety of colors results in a stippled appearance since the yarns are finer than wool. Color dominance depends on how many colors are used and how often each is repeated. Selecting too many hues causes colors to become indistinct due to nylon’s fine yarn size. High contrast colors make the stipple pattern more pronounced. By repeating colors, thereby using fewer colors, a striae effect can be achieved.

Compared to solid designs, striae or stippled patterns offer the advantage of disguising foot traffic and minor debris between cleanings.

Blending of ECONYL® 100% Regenerated Nylon Yarns Create a Stipple Effect

Six yarns of nylon (stipple) can fit through the needle at once.



Solid
EN101(6)

Dominant with accent yarn
EN101(4) + EN108(2)



Two colors used equally
EN108(3) + EN101(3)

Three colors used equally
EN101(2) + EN203(2) + EN108(2)

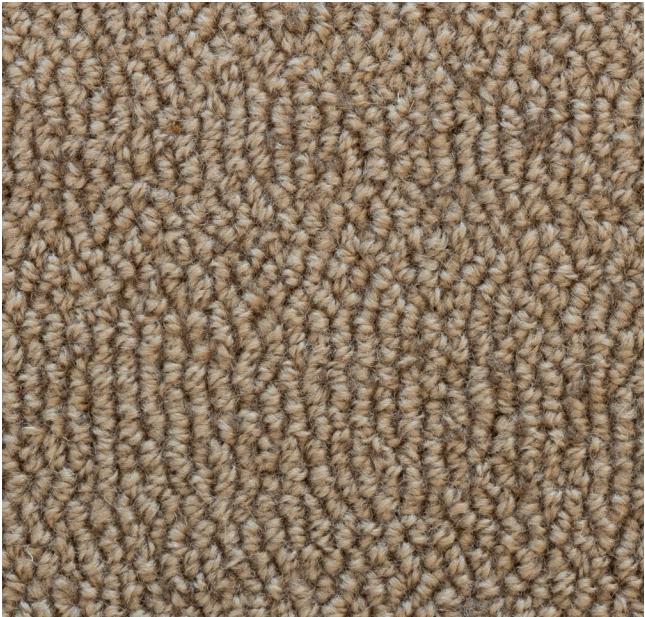
*This construction was used for the Verge Design Series.

A VALUE-ADD TECHNIQUE

3. SHEAR ART

Because wool exhibits natural color variation between cut and loop pile, tip shearing a wool loop construction adds beautiful flecking and depth. Tip shearing serves as a distinctive third design element beyond traditional cut-and-loop patterning. Delos offers tip shearing at levels of 20%, 40%, 60%, and 80%, with 20% representing the minimum amount applied to any loop construction.

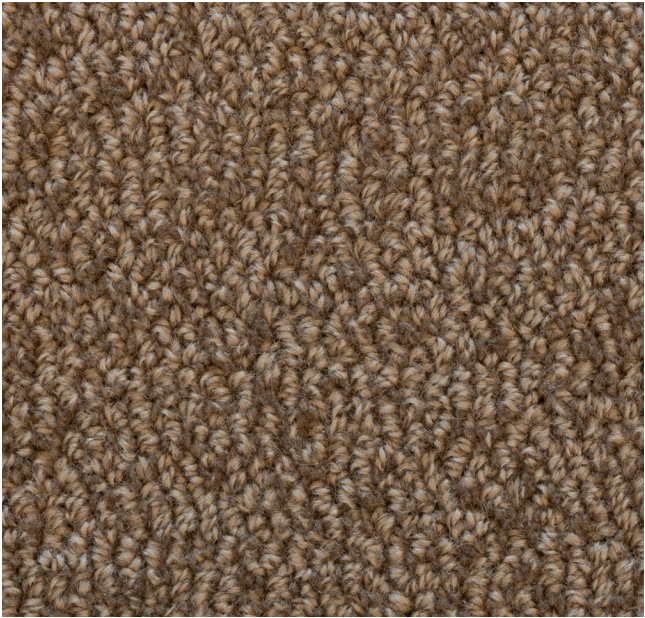
New Zealand Wool Offers the Best Tip Shear Result



20% tip shear



40% tip shear



60% tip shear



80% tip shear

Because nylon does not exhibit color variation between cut pile and loop pile, tip shearing a 100% nylon construction will not create as much depth as wool. To introduce more significant visual interest in ECONYL® nylon projects, consider incorporating New Zealand wool or applying cut-and-loop textural overlay patterns atop traditional layered designs.

ECONYL® Nylon Reveals Less Color Variance When Tip Sheared than Wool



20% tip shear



40% tip shear



60% tip shear



80% tip shear

A VALUE-ADD TECHNIQUE

4. PATTERN REFINEMENT

Over time, the edges of elements in layered patterns mingle, making lines between design elements less crisp. For lasting definition and added beauty, Delos offers hand-carved detail as an upcharge. A more economical option for line delineation is alternating cut pile and loop pile at no additional charge.



Allover cut pile



Alternating cut pile and loop pile



Cut pile with light pencil carve

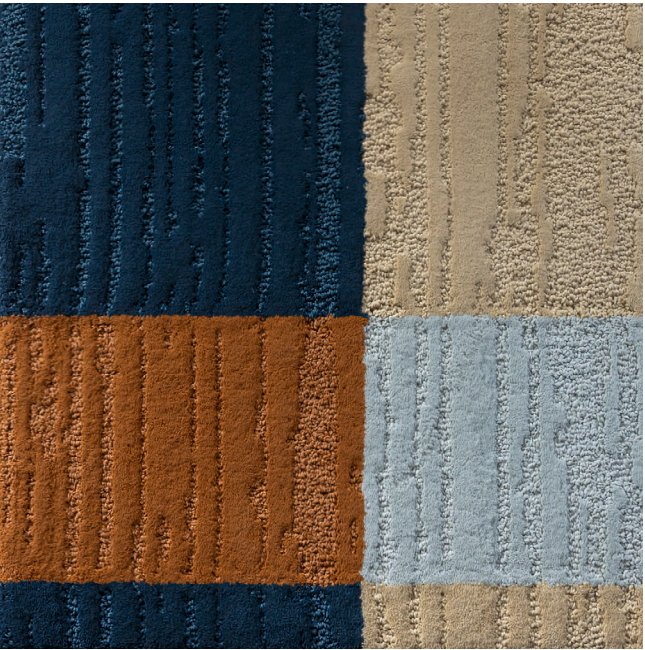


Cut pile with deep V-carve

A VALUE-ADD TECHNIQUE

5. TEXTURAL OVERLAYS

Textural overlays introduce dimension and depth when layered on top of patterned designs. Due to Delos’ state-of-the-art tufting technology, these intricate overlays are offered at no additional cost. Discover more examples on the following pages and online.



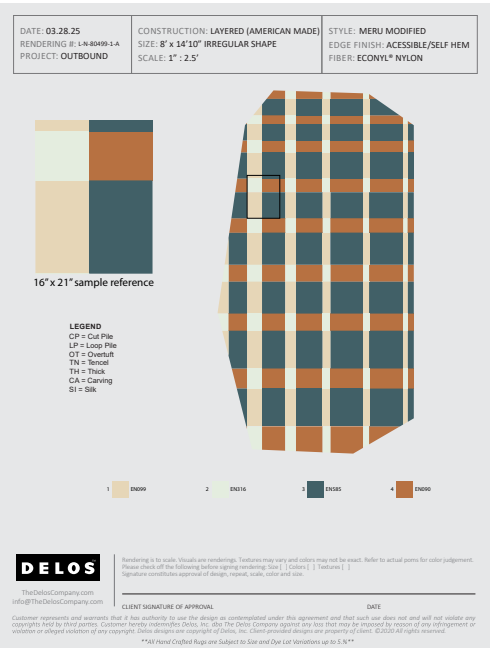
Allover textural overlay



Strategically placed overlay



Two strategically placed overlays

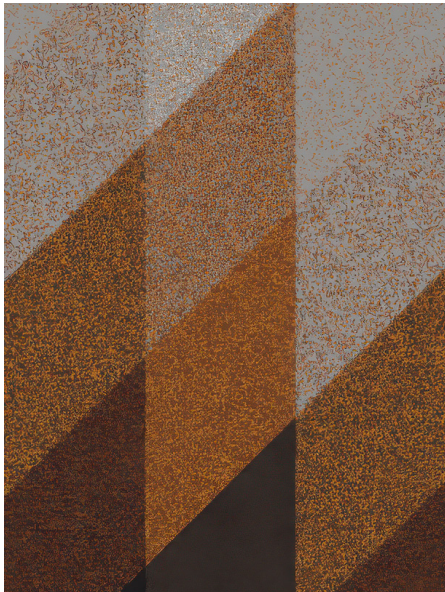


Project rendering

A VALUE-ADD TECHNIQUE

TEXTURAL OVERLAYS

What sets Delos apart is the ability to apply cut or loop textural overlays on top of patterned designs. Adding these overlays to layered designs—whether allover or in select areas—creates depth and dimension. This unique capability elevates pattern complexity without extra cost or time. **More textural overlay options are available at TheDelosCompany.com**



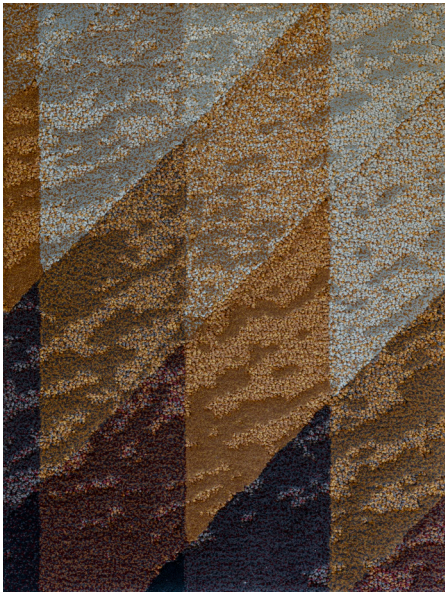
Stipple layered design

+

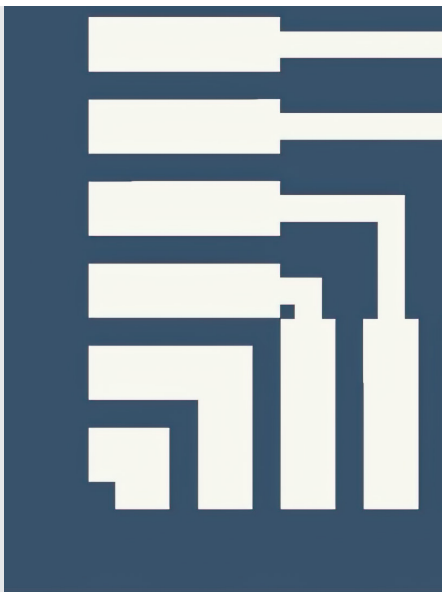


Overall textural overlay: Cowhide

=

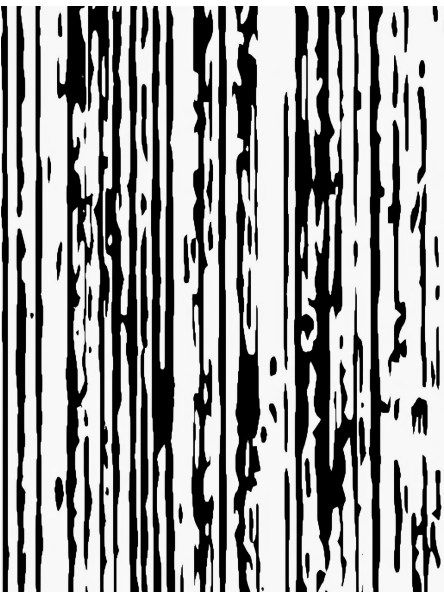


The result



Overtuft layered design

+



Strategic textural overlay: Ramie

=

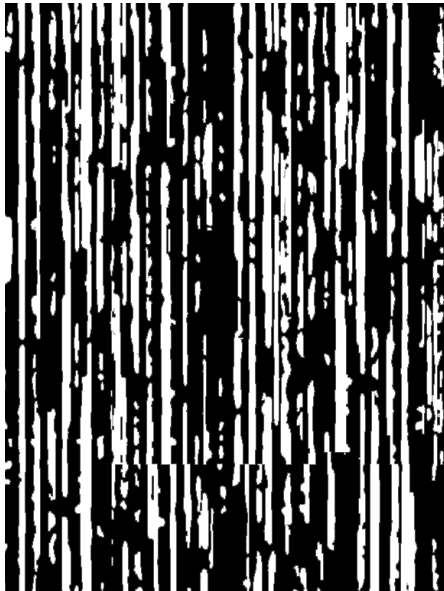


The result



Solid layered design

+



Strategic textural overlay: Rain

=



The result



Solid layered design

+



Strategic textural overlay: Rib

=



The result

ECONYL® NYLON

The samples shown above were tufted from 100% ECONYL® nylon made from fishing nets, spent carpets and other nylon waste that has been collected around the world.

100% NEW ZEALAND WOOL

These samples were tufted from Classic New Zealand Wool, a sustainable and biodegradable fiber that naturally renders over 30 kilograms of CO₂ in a sheep's lifetime. Wool dyes richly, wears durably, and creates rugs that are resilient, long lasting, and static free.

A VALUE-ADD TECHNIQUE

6. SHAPE POSSIBILITIES

From classic rectangles and elegant ovals to bold geometrics and freeform contours, Delos offers an inspired selection of rug shapes designed to complement every vision. Customers can also collaborate with Delos to create custom shapes. Whether reimagining a room or defining a space, Delos fuels creativity in every shape and form. Non-standard shapes require a European cut edge.

See more shapes at TheDelosCompany.com



Round



Octagon



Emerge



Decagon



Barrel



Capsule



Rounded Rectangle



Boat



Elongated Octagon



Wide Scallop



Elongated Oval



Burbank

“YOUR HOME SHOULD TELL THE STORY OF WHO YOU ARE, & BE A COLLECTION OF WHAT YOU LOVE.” — NATE BERKUS

... OR CREATE YOUR OWN

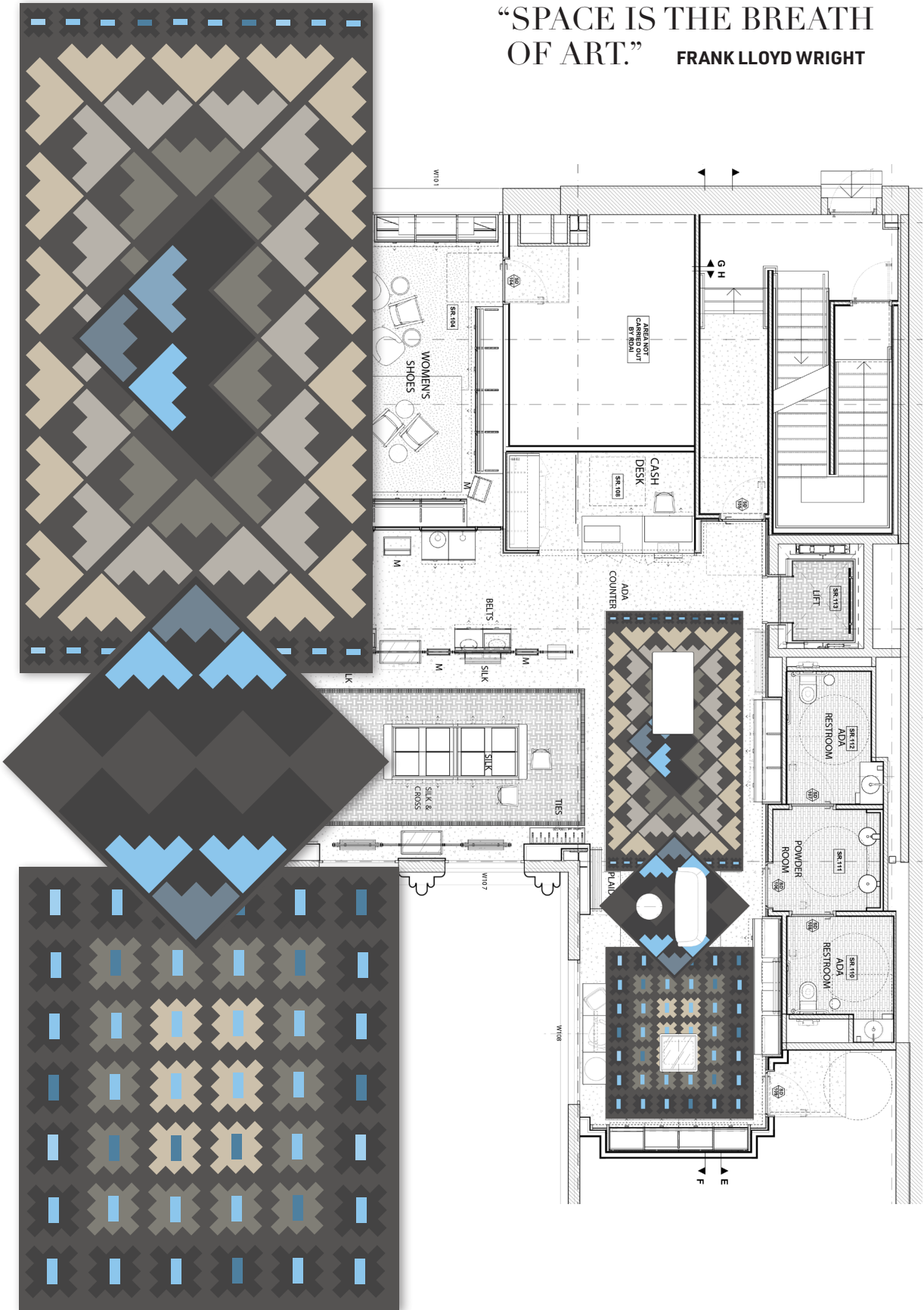
A VALUE-ADD TECHNIQUE
DESIGN TAKES SHAPE

Using Shape to Define Spaces

Delos can craft uniquely shaped rugs that visually read as several distinct rugs, whether tufted as one, as several joined upon arrival, or installed as individual rugs. This tailored approach creates visual cohesion while defining individual areas seamlessly.



“SPACE IS THE BREATH
OF ART.” **FRANK LLOYD WRIGHT**



AMERICAN MADE

ECONYL® NYLON
METALLICS

EN901

EN931

EN921

EN911

EN941

BOUTIQUE YARNS IN CURATED COLORS

*Discover techniques for creating on
trend rugs by combining these undyeable
yarns or by mixing in dyeable yarns
from pages 32-33.*

TAPIOCA

MIST

STRING
YARNS

CHARCOAL

BISQUE

IRON

SMOKE

LEAD

PEBBLE BEACH

PEBBLE

COBBLESTONE

HAZE

MORNING DEW

FEDORA

DRIFTWOOD

ARCTIC

SHORELINE

AMERICAN MADE

FILAMENT SILK

SILK WOOL

ECONYL® SOFT NYLON

BOUTIQUE YARNS FOR LIMITLESS COLOR

**Viable for hospitality and high-traffic areas*

Dyeable yarns offer endless color options and textures. Incorporate them as undyed or dyed. Mix it up with a choice of 144 colors or dye to match. Additionally, unleash your creativity by combining these dyeable yarns with curated yarn options shown on pages 30-31.

ECONYL® DYEABLE NYLON*

CLASSIC
NEW ZEALAND WOOL*

FINE CLASSIC
NEW ZEALAND WOOL*

INDUSTRIAL WOOL*

SMALL FELTED
NEW ZEALAND WOOL*

LARGE FELTED
NEW ZEALAND WOOL*

LARGER FELTED
NEW ZEALAND WOOL

AMERICAN MADE FIBERS

Natural Options

Classic and Fine Classic New Zealand Wool

New Zealand wool is known for its longer staple (fewer break points), reducing shedding. Shedding is normal at first but will lessen over time. Yarns that sprout can be clipped even.

Indo Striae Indian Wool

This wool blend features variegated gray tones. It works well in combination with Classic Wool or small felted wool. Medium to lighter shades dye best as dark dyes may obscure its inherent striae effect.

Indian wool is known in rug manufacturing for its strength, warmth, and natural character. Sourced from hardy sheep raised in diverse climates, Indian wool is more coarse than New Zealand wool, giving it robust texture and hand-crafted charm well suited for hand knotted and handwoven rugs. As a renewable resource, Indian wool contributes to environmentally responsible and sustainable practices.

Felted New Zealand Wool

Small felted NZ wool can be tufted for higher traffic requirements. Large and larger felted wool yarns are not warranted for heavy traffic areas but provide a casual and welcoming environment for residential projects.

Silk Wool

Delos silk wool is a 50/50 blend of silk and New Zealand wool which offers a luxurious sheen and soft hand. Customers should provide color samples with sheen when specifying colors for custom dyeing. To accurately specify colors, Delos should be notified whether colors are being matched to the cut pile or loop pile since loop pile shades lighter. Additionally, the deeper the color, the more difficult it will be to match its intensity.

New Zealand Wool

New Zealand wool is renowned for its softness and luster, creating rugs with a rich, elegant appearance. Its natural crimp provides elasticity

and durability, helping rugs resist crushing even in high-traffic areas. Wool also has inherent stain resistance and flame retardancy, along with excellent insulation and sound-absorbing qualities. Beyond performance, New Zealand wool's ability to absorb dyes deeply and evenly allows for rich, long lasting color.

Regenerated Fiber Options

ECONYL® Solution Dyed Nylon

ECONYL® nylon is made from fishing nets, spent carpets and other nylon waste that has been collected around the world. This fiber is available in 144 colors included in the Delos pom folder. ECONYL® nylon is UV stable and the best yarn system for use near windows with consistent sunlight.



ECONYL® Dyeable Nylon

ECONYL® nylon is made from fishing nets, spent carpets and other nylon waste that has been collected around the world. This fiber is the best choice when a custom color match is required beyond the 144 offered in the Delos pom folder or the additional 32 colors available upon request from the extended global offering. Dyed nylon does not achieve the same UV stability as solution dyed ECONYL® nylon.

JOURNEY MADE FIBERS

Natural Options

Indo Striae Wool Blend and Indian Wool

When budget is key, this yarn system performs best as a loop.

Indian wool is valued in rug manufacturing for its strength, warmth, and natural character. Sourced from hardy sheep raised in diverse climates, Indian wool is coarser than New Zealand wool, giving it a robust texture well-suited for hand knotted, hand loomed, and hand tufted rugs. As a renewable resource, Indian wool supports sustainable practices.

New Zealand Wool

New Zealand wool is renowned for its softness and luster, creating rugs with a rich, elegant appearance. Its natural crimp provides elasticity and durability, helping rugs resist crushing in high-traffic areas. Wool also has inherent stain resistance and flame retardancy, along with excellent insulation and sound-absorbing qualities. Beyond performance, New Zealand wool's ability to absorb dyes deeply and evenly allows for rich, long-lasting color.



Regenerated Fiber Options

PET (Polyethylene Terephthalate)

PET is valued for its durability, sustainability, and versatility. Derived from 100% post-consumer waste including recycled plastic bottles, PET offers an eco-friendly alternative without sacrificing performance. On average, about six water bottles are used per square foot of rug. Please inquire for documentation verifying the yarn's 100% post-consumer waste content.



Tencel

Tencel is a viscose, lyocell, or rayon fiber. Less durable and more moisture-sensitive than wool or nylon – they tend to show footprints, water spots, and wear faster in high-traffic areas. Delos does not warranty Tencel for high-traffic spaces. These fibers are:

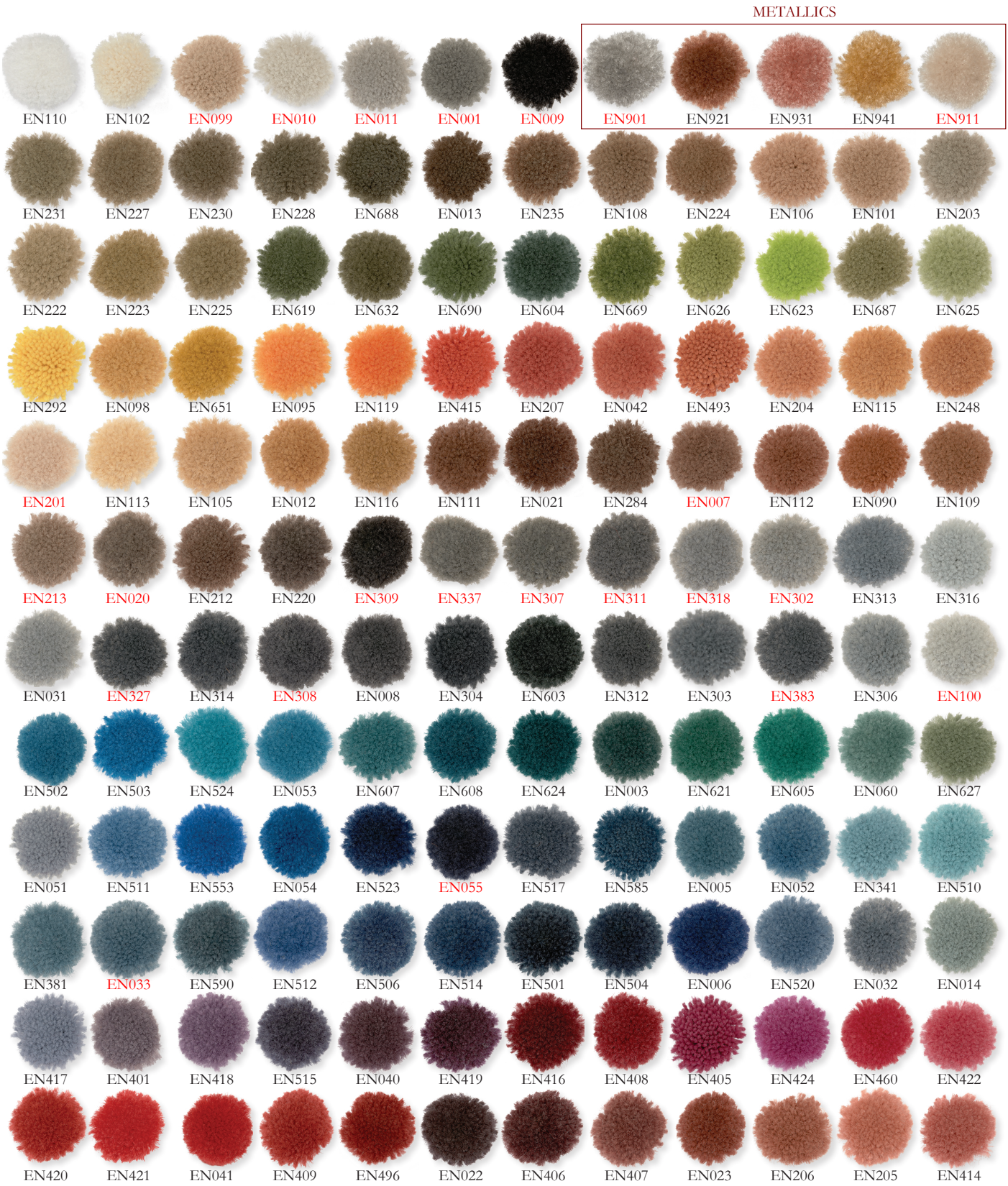
Cellulose-Based: Made from natural sources like wood pulp.

Regenerated: The cellulose is dissolved, extruded, and reformed into fiber – so it's not a natural fiber like wool, but also not fully synthetic like nylon.

Soft and Silky: Tencel has a luxurious sheen and drape similar to silk.

144 Vibrant Colors
FROM POM FOLDER

ECONYL[®] NYLON

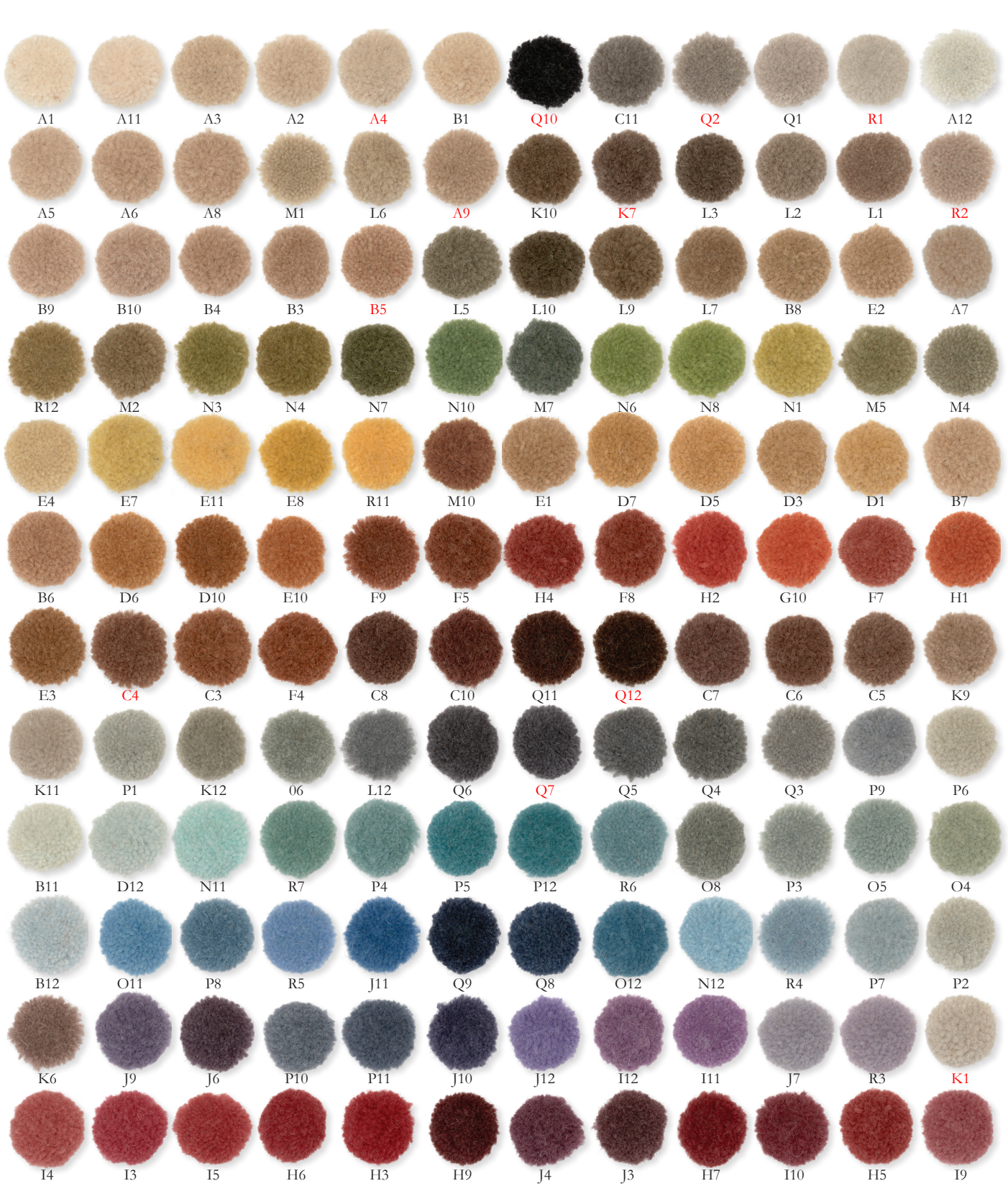


American Made Rugs Solution dyed ECONYL[®] nylon delivers vibrant color and outstanding performance for the price. This fiber is resistant to stains, bleach, and wear. ECONYL[®] nylon is made from discarded fishing nets, spent carpets, and other nylon waste collected around the world and is endlessly regenerable. A dyeable version of ECONYL[®] nylon is also available.

● Numbers indicated in red are in-stock QuickShip colors.

144 Timeless Colors
FROM POM FOLDER

NZ WOOL



American Made Rugs & Journey Made Rugs New Zealand wool dyes beautifully and its long staple fibers reduce shedding. Delos follows the New Zealand Animal Welfare Act of 1999, ensuring humane shearing practices. Naturally hypoallergenic and flame retardant, wool also renders harmful VOCs like formaldehyde and helps regulate moisture for a healthier indoor environment. Dyeable silk wool is also available.

● Numbers indicated in red are in-stock QuickShip colors. There are more color options in the QuickShip box including extra grays.



PET POM CHAIN

Designers can specify colors for **Journey Made** flatweaves, sustainably crafted from 100% post-consumer waste including water bottles. Explore the latest color selections at TheDelosCompany.com. Custom-dyed colors are available with a 2,000-square-foot minimum.

IN-STOCK QUICKSHIP COLORS



ECONYL® Nylon 25 In-Stock Colors



Classic New Zealand Wool 25 In-Stock Colors



THE DELOS POM FOLDER

Make Project Planning Easy

The Delos architectural pom folder showcases 144 nylon and 144 wool pom colors. Designers have access to 176 solution dyed ECONYL® nylon colors, with the 32 additional colors available upon request. Although ECONYL® nylon can be custom dyed, solution dyed options provide greater sun-fade resistance.



CUSTOM COLORS

Just as wood stain results vary by wood species, dyes present uniquely across yarn types. When choosing hues, clients should determine whether to match the cut pile or the loop pile. In wool and silk wool constructions, loop pile typically appears lighter. For silk wool—with its signature sheen—color matching is most precise when using fabric or paint references that share a similar luster.

THE FINE ART OF RUG CONSTRUCTIONS



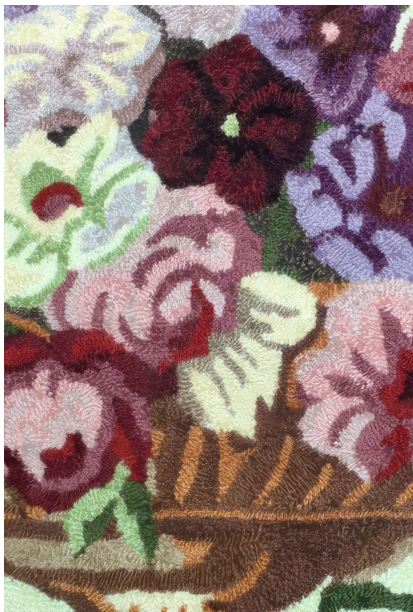
Tibetan Knotted 150, 100, 60
The higher the knot count, the more detail is evident. Lower knot counts create a ribbed effect.



Soumak
A flatwoven construction that creates a raised, braided texture. Cut pile accents are available.



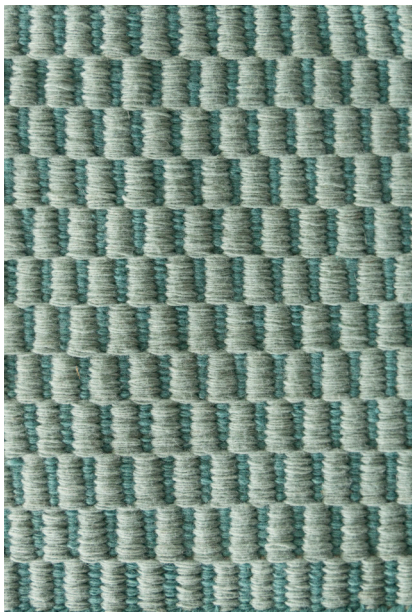
High Density Tufted
A dense construction that is appropriate for high-traffic settings.



Microloop
An overall smaller loop for finest detail. Tip shearing maximizes color effect. See tip shear levels on pages 20-21.



Hand Loomed
A cut pile and loop pile rug woven on a loom typically having a linear appearance.



Flat Woven
Reversible rugs woven by hand on a horizontal loom.

“CRAFT IS THE VISIBLE EDGE OF ART.”

DAVID BAYLES & TED ORLAND

Our weaving facility in India is **SA8000 certified**, ensuring socially responsible practices. The facility combines mechanical tufting guns for high density tufted rugs with the time-honored craft of weaving, skills often passed down through generations. Each rug is meticulously hand finished, with Persian knot construction available upon request.

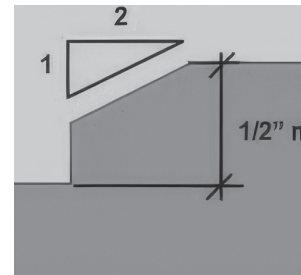


TERMS *of* THE TRADE

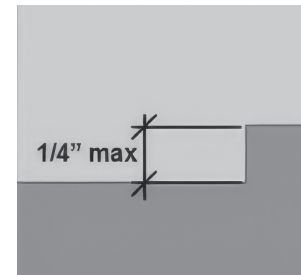
This comprehensive Glossary of Terms helps simplify both the American Made and Journey Made custom conversation.



Achromatic Collection
Design: Rogue



Change in level between 1/4" and 1/2"



Change in level up to 1/4"

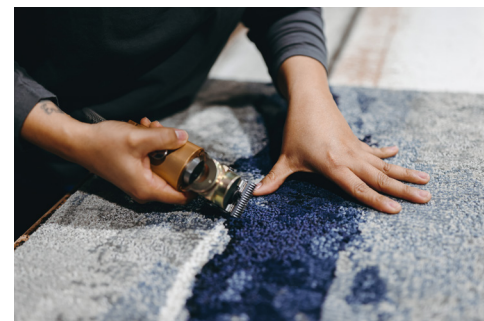
Accessible Edge A J

Maximum pile thickness will be 1/2" (13mm). Changes in level up to 1/4" (6mm) can be vertical and without edge treatment. Changes in level between 1/4" and 1/2" (6mm and 13mm) must be beveled with a slope no greater than the ratio of 2:1.



Allover Cut and Allover Loop A J

Loop yarns appear two to three times lighter than cut yarns. When specifying loop for color matching, look at the side of the yarn. Cut pile rugs tend to feel more comfortable, while loop constructions have better wearability.



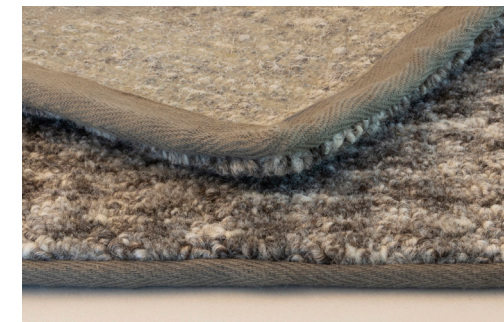
American Made Rugs A

Delos rugs are proudly made in our U.S. facility using state-of-the-art robotics paired with 85% hand craftsmanship to create custom rugs for memorable spaces.



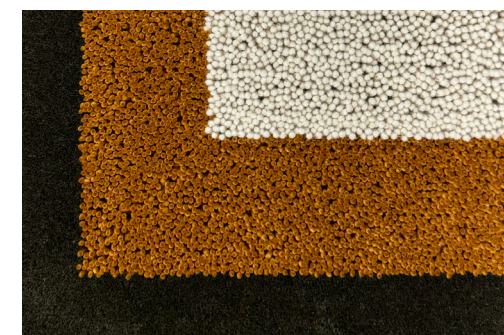
Anti-Static A J

Wool is naturally anti-static, while synthetic fibers such as nylon or PET can be treated or engineered to minimize static by request. This enhances comfort, prevents small shocks, and reduces static attraction of dust and dirt.



Bound Edge J

A finishing technique where a solid polyester tape is wrapped around the rug's edge and securely sewn in place for a durable finish.



Border Rug A J

Border rugs are on trend and can be patterned or textural to create a finished look.

Border: Outer outline.

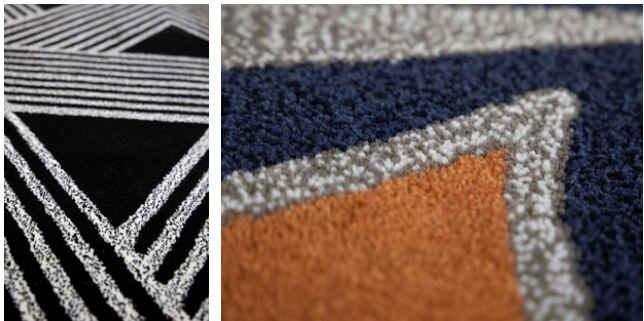
Interior Border: Line between the outermost border and the field.

Field: Innermost part. It can be a solid or a tonal cut and loop pattern.



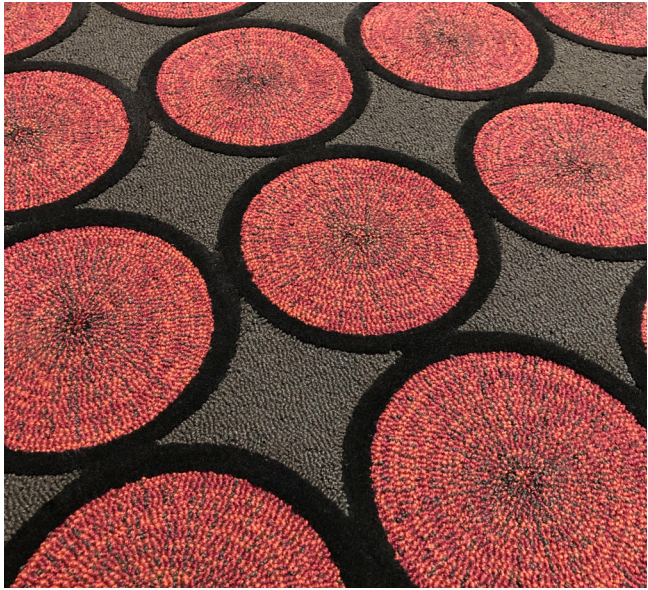
Carving **A** **J**

Carving may be specified to ensure long-term color separation, as ongoing foot traffic can cause yarn tufts to mingle over time. A light pencil carve is more traditionally used in transitional and classic styles, offering subtle definition. In contrast, a V-carve is often specified for more modern pieces to create a pronounced, sculpted appearance.



Color Blending **A** **J**

When multiple ends of yarn are threaded through a single needle. The finer the yarn, the more ends can be combined, allowing for a greater range of effects. Areas may appear tonal or contrasted, depending on color selections. The lefthand photo shows an equal mix of two contrasting yarn colors of smaller ECONYL® nylon, creating a salt-and-pepper stippled effect. The right uses an even number of contrasting ends of larger Classic New Zealand Wool. See pages 14-15 for more examples.



Concentric Fill **A**

Tufting directionally using a striae to create visual interest.

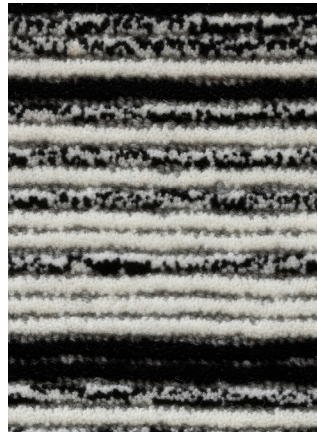


Color Separation **A** **J**

Craftspeople separate areas of color by hand using tweezers. With ongoing foot traffic, yarn tufts will gradually mingle, reducing visual definition. To maintain distinct separation, carving may be specified, providing added clarity over time.



American Made option



Journey Made option

Construction **A** **J**

Construction refers to the manufacturing method used to create a custom rug or carpet. Project managers consider styling, budget, delivery, installation environment, and wear expectations to recommend optimal constructions. Multiple constructions may be quoted to ensure designers have options to meet project criteria.

American Made Options: Tufted robotically with hand finishing.

Journey Made Options: Tibetan hand knotted (150, 100, and 60 knots), soumak (80 knot), high density tufted (cut pile & loop), microloop, loomed, flatweave.



Density **A** **J**

The concentration of yarn tufts in a rug, typically measured as the number of tufts per unit area, which directly impacts the rug's weight, durability, and feel underfoot.



Dye To Match **A** **J**

The fiber coloring process can take up to two weeks and requires a dyed pom to be provided for approval. Delos offers 144 standard ECONYL® 100% regenerated nylon poms and 144 New Zealand wool pom options within its pom folder. Nylon colors may be selected for wool projects and vice versa, though yarns absorb dye differently—similar to stain on varying wood species. Delos can also dye-to-match Pantones, paint chips, fabrics, or poms. When dyeing silk wool, selecting a paint or fabric with sheen ensures a closer match.



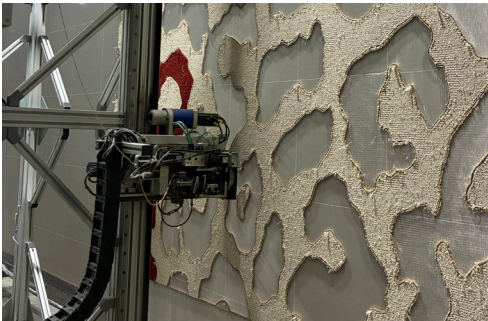
ECONYL® Solution Dyed Nylon Yarn **A**

100% regenerated nylon made from recovered fishnets, reclaimed carpets, and nylon waste from around the world. This fiber is available in 144 colors included in the Delos pom folder. ECONYL® nylon is UV stable and the best yarn system for use near windows with prolonged sunlight.



ECONYL® Dyeable Nylon Yarn A

100% regenerated yarn like the solution dyed version. Dyed nylon does not achieve the same UV stability as solution dyed ECONYL® nylon.



Element A J

Individual areas of a pattern that are tufted within the lines like a coloring book. There is a minimum 1” element size stateside. Unlimited colors are possible, but may push costs due to minimum dye lot charges. Projects requiring many colors are often sourced abroad, as pricing is primarily determined by run time. As elements and colors increase, so do tufting time and cost. Projects can be value engineered to meet budget requirements.



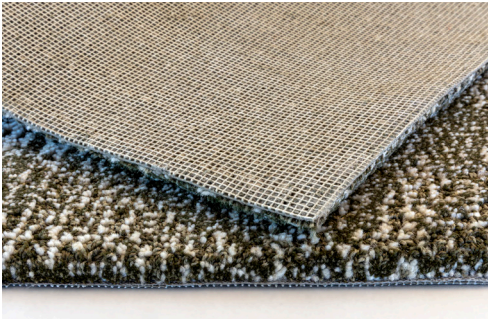
Ends A

Refers to the number of ends of the yarn that can thread through the needle at one time.



Etched Overtuft A

A construction where the pattern is dominant, with approximately 20% of the carpet showing a consistent single colored loop—similar to the uniform ground color of an Oushak rug. Requires three or more colors, with a minimum element size of 0.5”. As with layered rugs, costs increase with the number of elements, since pricing is determined by robotic tufting time.



European Cut Edge A J

Delos carpets feature a rubberized backing with minimal additives for flexibility and strong tuft bind, keeping cut edges intact without fraying.



Felted Wool Yarn A

The wet process that uses hot water, soap, and friction to open wool fibers, causing them to interlock and mat together. Mechanically felted

wool sheds less than hand-felted. Delos is the largest U.S. importer of premium felted wool from New Zealand.

Dyeable selection: Small, large, and larger undyed felted wool yarns
Curated as-is selection: String yarns and Pebble Beach yarns
Collections featuring felted wool: Achromatic, Hamptons Stripes, Naturalist



File Formats Accepted A J

Delos can work with client sketches, fabric samples, moodboards, or digital files. Delos accepts the following digital design file formats: Adobe Illustrator (AI), EPS, PSD, BMP, PNG, JPEG, and PDF.



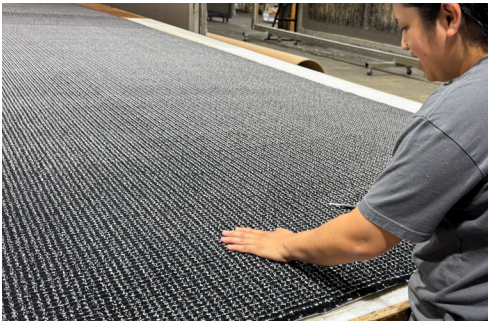
Fine Classic Wool A

A finer version of Delos’ standard Classic Wool, this smaller yarn is comparable in size to ECONYL® nylon. Its reduced diameter allows more yarns—and therefore more colors—to be threaded through the needle simultaneously, enhancing color flexibility. The finer yarn also enables more detailed tufting, making it ideal for projects that require intricate design or specific styling needs.



Finishing A J

The final stage of rug making in which skilled craftspeople shear, sort, carve, and apply the chosen edge finish.



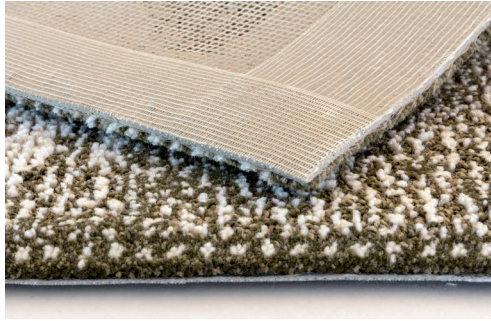
Finished Yarn Weight A J

Expressed in ounces per square yard of a finished carpet, the finished yarn weight is determined by removing all yarn from the finished rug and dissolving any foreign non-yarn materials.



Fringe J

Fringe is created from the warps extending from the ends of a rug that can be weft-faced, braided, tasseled, or secured to prevent fraying.



Fused Edge **A**

Created by embedding a woven tape along the carpet's cut edge, providing a secure, framed finish that will not fray and will lay flat on the floor.



Fuzzing/Shedding **A** **J**

The hairy effect that remains on a rug's surface caused by fiber breaking. New Zealand wool has a longer staple, resulting in fewer break points when spun. Wool will shed more initially, but will lessen over time. ECONYL® nylon does not shed.



Hand Carding **J**

After washing, wool is worked back and forth in opposing fashion between two brushes with angled teeth. This process aligns the wool fibers, lengthening and softening the wool before it is spun.



Hand Spun Yarn **J**

The twisting technique that forms yarn from fibers. The fiber intended is drawn out, twisted, and wound onto a bobbin by hand. This results in an uneven yarn that absorbs dye at varying intensities, creating a beautiful, natural striae effect.



Hand-Sewn Seams **A**

Delos puzzles projects that are larger than 13'6"x60' or 15'6"x40' by hand sewing pieces together before applying latex and backing. Many companies solely rely on tape or latex which may not provide optimal wearability over time.



Hole Punching **J**

To begin a tufted construction, hand drawings are hole punched with needles to transfer the impression onto the rug's primary backing.



Indo Striae Wool Yarn **A** **J**

Indo striae yarn is created by adding varying shades of gray yarn randomly in the spinning process. This creates a heathered appearance. When dyeing indo striae yarn, it is best to use light to medium shades so the striae (also called slubbing) shows well.



Integrated Non-Skid Backing **A**

Delos' stateside backing is pure rubber with select additives for hand-knotted pliability. Tested coefficients of friction are 0.73 (dry) and 0.70 (wet), exceeding the standard ≥ 0.60 slip-resistance requirement. If slippage control is the main concern, an additional rug pad is unnecessary. For a barrier layer to aid cleanability, a separate or attached rug pad can be specified.



Knot Count **J**

The number of knots per square inch in a rug determined by multiplying the number of vertical knots by the number of horizontal knots. A skilled Tibetan weaver can knot as many as 12,000 knots per day, while an average Persian knot weaver can complete around 10,000 knots per day. Because individual knots are tied, latex is unnecessary.



Layered Pattern **A** **J**

Patterns that require elements to be tufted individually within the lines like a coloring book with a minimum element size of 1" for American Made rugs. Unlimited colors are possible, but in excess may push costs outside of the budget due to minimum dye lot charges. Projects requiring many colors are often sourced abroad, as pricing is primarily determined by run time. As pattern elements and colors increase, so do tufting time and cost. Projects can be value-engineered to meet budget requirements.



Layered Pattern Using Felted Yarn

A

When elements are filled with large felted yarn, movement occurs. Edges between colors will not remain as clean as nylon or wool, but create casual comfort.



Layered Pattern Using Indo Striae Wool Yarn

A

J

American Made and Journey Made layered patterned rugs may use indo striae yarn with slubbing for a hand-crafted effect.



Layered Pattern Using Indo Striae Wool Yarn with Multiple Strategic Textural Overlays

A

J

The photo illustrates indo striae yarn within a layered pattern. This yarn’s natural random striation introduces hand-crafted appearance. Textural overlays further enrich the composition, enhancing visual interest and celebrating the beauty of organic design.



Loom

J

A frame used to interlace warp (lengthwise) and weft (crosswise) yarns to create fabric or rug structures. In rug production, looms hold the foundation yarns under tension while artisans weave, tuft, or knot fibers to form the rug’s design, texture, and structure.



Luster

A

J

Refers to the brightness or sheen of fibers, yarns, or carpet. New Zealand wool, with its high lanolin content, has a natural sheen that aids cleanability by keeping stains on the surface for easier treatment. Silk wool offers even greater sheen with a soft, luxurious hand inherent to the fiber.



Metallic Yarn

A

Delos offers five traditional metallics (Silver, Charcoal, Copper, Rose Gold, and Gold) in ECONYL® 100% regenerated nylon made from recycled fishing nets, reclaimed carpets, and other nylon waste collected from around the world. These metallic fibers combine shimmer with durability which is ideal for commercial use. Maximum shimmer is achieved when viewed on the loop side of the pom.



MindClick

A

Delos is Mindclick rated. Mindclick provides Product Intelligence™ for Responsible Supply Chains. By being MindClick rated, The Delos Company is making it easy for our customers to choose better products.



Mothproofing

A

J

While many companies do not invest in mothproofing since it is unseen, Delos considers it essential to the manufacturing process. Dyed and undyed yarns are treated to prevent moth damage.



Non-Standard Shape

A

J

Shapes outside of a rectangle, square, or round. Delos requires templates for non-standard organic shapes and staircases to ensure success.

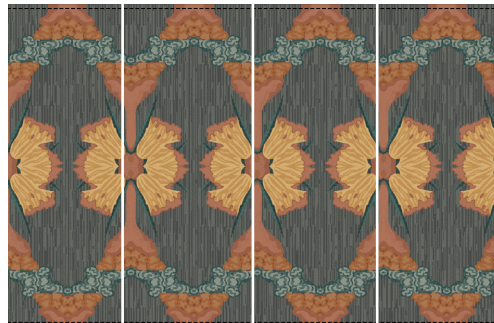


Ombre

A

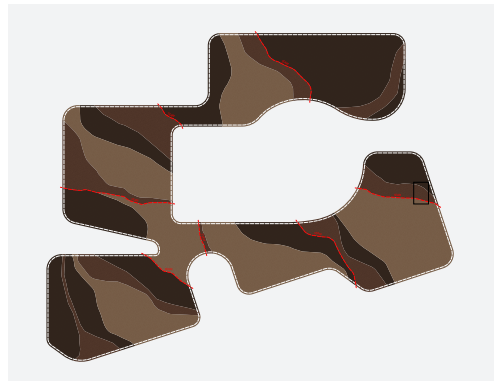
J

A color technique that graduates from light to dark or dark to light by pairing varying numbers of colors and yarns together. It can appear as a background or within a design element.



Oversized Paneling **A** **J**

When a large project is run in rectangles and seamed together onsite. This is a great way to reduce shipping costs for larger projects.



Oversized Puzzling **A** **J**

When a large project is run as puzzle pieces to disguise the seam when sewn together. This project was seamed and carved between joints onsite.



Overtuft **A**

This is when a background is tufted before or after the rug’s pattern to create textural contrast within the design. This technique allows the rug to complement its installation area rather than dominate it and can be achieved in various ways, as shown in the following examples.



Overtuft: Classic Wool Cut Pile Overtuft on High/Low Striae Loop Rib **A**

Overtufting onto a rib introduces tonal variation and dimension, and is very on trend.



Overtuft: Classic Wool Cut Pile on Cut and Loop Indo Striae Rib **A**

When a rib background is tufted before or after the pattern elements are filled in to result in a less exact and more textural look.



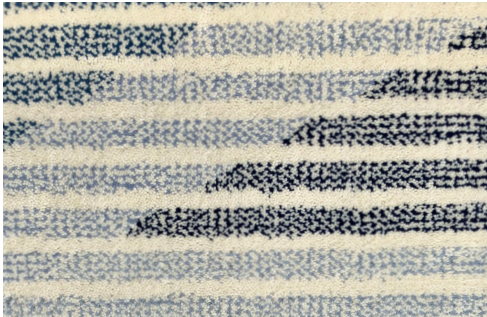
Overtuft: Classic Wool on Cut Pile Indo Striae **A**

The process of tufting a secondary pattern on top of an indo striae base. This technique disrupts the underlying linear design, introducing an organic, layered effect that enhances textural richness.



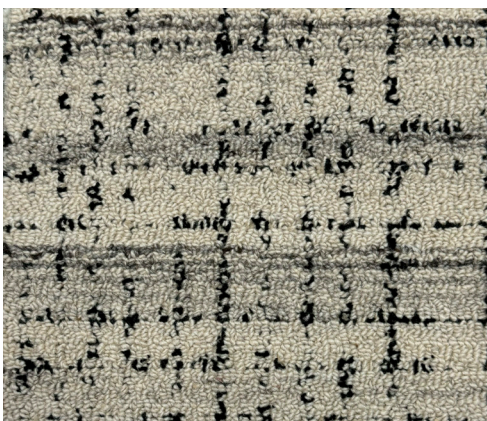
Overtuft: Cut Pile on Cut Pile **A**

When a cut pile background is tufted before or after the pattern elements are filled in to result in a less exact and more textural look.



Overtuft: Cut Pile on Cut Pile of Small Felted Wool **A**

Using a cut pile overtuft of Classic New Zealand Wool on top of small felted NZ wool breaks up a design, making it feel like an inviting sweater.



Overtuft: Loop on Indo Striae Loop **A**

When a loop pile background is tufted as a loop before or after the pattern elements are filled in to result in a less exact and more hand-crafted look.



Overtuft: Loop on Loop **A**

When a loop background is tufted before or after pattern elements are overtufted on top as a loop to result in a less exact and more hand-crafted appearance.



Patina Construction **A**

An overtuft construction that incorporates a minimum of two positions overlaid onto one another. The background is made up of minimal heights of loop pile which maximizes wear, married with cut pile that adds softness underfoot.



Persian Knot **J**

Used for finer detailed traditional rugs. The yarn is wrapped around only one warp, then passed behind the adjacent warp so that it divides the two ends of the yarn. Rugs woven with this knot are generally more accurate and symmetrical.



PET (Polyethylene Terephthalate) Yarn A J

Yarn made from 100% post consumer waste that includes water bottles. An average of six water bottles are used per square foot to make flatweave rugs. Corresponding data is available upon request.



Pile A J

The upright surface fibers (tufts or loops) that form the face of the rug. Pile height measures the length of these fibers from the backing to the tip, generally expressed in fractions of an inch or millimeters. Shorter pile heights tend to create denser, more durable rugs, while taller pile heights are softer, more plush, and reserved for residential use.

Pile crush describes the flattening or distortion of the pile due to foot traffic, furniture weight, or wear over time. It can cause changes in texture, sheen, and appearance, particularly in cut pile constructions.



Ply A J

Twisting two or more strands of yarn together typically in the opposite direction in which they were spun.

1. A single-end component in a plied yarn.
2. The number of single yarns combined to form a plied yarn, e.g., two- or three-ply.



Rendering A J

CAD (Computer Aided Design) drawings that must be approved via signature to ensure accuracy.



Robotic Tufting A

Delos American Made rugs are manufactured using computer-aided robotics for tufting yarns into stretched canvases. While on the frame, latex is applied to the back to encapsulate the yarns and hold them in place before rugs are cut down and finished.



Rod J

The steel pole that gives the Tibetan knot its signature rowed appearance. The fewer knots used, the more horizontal ribbing occurs. Loops are uncut knots that appear horizontally rowed.

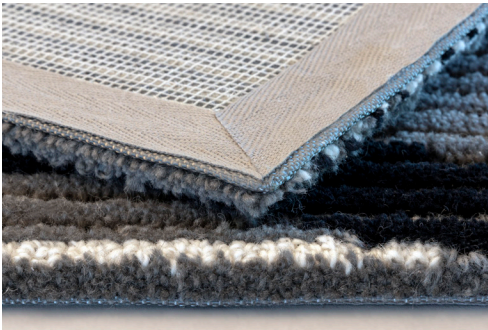


Rug Pad A J

Delos offers two rug pad options, both of which can be cut to the size and shape of each project and trimmed 1" shorter along the edges. Upon request, Delos can also attach the pad directly to the rug.

Flatweave Rug Pad: Specially designed to provide necessary air flow to aid in drying and to prevent slippage.

Indoor Rug Pad: American Made, warrantied for radiant panel heat, and dual sided—featuring a softer side for use over hard surfaces and a textured side for use over carpet.



Self Hem A

A finish where the primary backing is wrapped over the secondary backing and secured in place. A cotton tape is then applied on top, serving as a decorative border. This is the most labor intensive way to produce an edge finish. Since Delos latex is superior, Delos rugs do not require a self hemmed edge to prevent fraying.

A *American Made* **J** *Journey Made*



Serging by Hand **A** **J**

An edge finish in which yarn is wrapped and sewn around the outermost edge of the rug to create a clean, finished appearance. American Made rugs may be finished with a microserged edge applied by machine or sewn by hand. Journey Made rugs are finished with a hand-sewn serged edge.



Serging: Micro Serging Machine **A**

An edge finish in which yarn is wrapped and sewn around the outermost edge of the rug to create a clean, finished appearance. American Made rugs may be finished with a microserged edge applied by machine or with a hand-sewn serge.



Shearing **A** **J**

After the latex backing is complete, rugs are trimmed using a hand-operated machine. The goal is to achieve a specific pile height by rubbing

to pull up loose fibers and then trimming for a clean, finished appearance.



Shipping Crates **J**

Boxes constructed for packaging oversized carpet to travel from India to the United States.



Shipping Tubes **A**

Delos use tubes to ship oversized carpets in the US to ensure safe arrival for immediate installation without damage.



Silk Wool (50/50 Blend) **A**

This specialty yarn combines 50% silk with 50% New Zealand wool, spun together to achieve both visual and tactile luxury. The addition of silk enhances sheen and softness, while the wool provides durability and resilience.

Silk wool should be dyed to match a color reference that carries a slight sheen—such as a paint chip or glossy sample—rather than a flat, matte swatch. This ensures the yarn’s natural luster is fully realized in the finished rug.



Solution Dyed **A**

Delos ECONYL® nylon is solution dyed, which is when color is added to the fiber while it’s still in pellet form—before being extruded through the machine head. Like a carrot, the color runs throughout the entire fiber, unlike wool, which is more variegated, like a radish. This process makes solution dyed nylon exceptionally colorfast and a preferred choice for hospitality and commercial designers. In addition to the Delos 144 standard colors, expanded solution dyed options are accessible through the Delos design team.

A dyeable nylon version is also available, though it does not offer the same UV stability as the solution dyed colors featured in the pom folder.



Stipple **A** **J**

When smaller ends of colored yarn are mixed together resulting in a dotted appearance. Compared to solid designs, stippled patterns offer the advantage of disguising foot traffic and minor debris between cleanings.



Stippled Overfuf **A**

An overtuft construction in which approximately 50% of the carpet surface presents a consistent colored loop, reminiscent of the uniform coloration seen in an Oushak. This construction requires at least two colors, with a minimum element size of 0.5”.



Striae **A**

Delos can replicate a striae using varying shades and sizes of yarn, resulting in dashes. A striae can be achieved using all wool or a wool and ECONYL® nylon blend. Compared to solid designs, striated patterns offer the advantage of disguising foot traffic and minor debris between cleanings.



Striated Overfuf **A**

Customers can specify the amount and placement of a colored loop yarn throughout the design to create surface variation. This requires at least three colors with a minimum element size of

0.5". While it delivers a high end appearance, the slower tufting process results in increased cost.



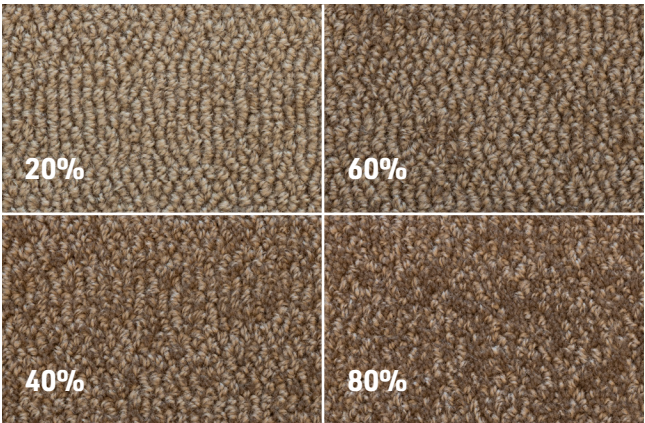
Strikeoff A

Delos tufts 12" or 16"x21" samples (strikeoffs) to ensure project success. Samples are tufted on the same canvases as full projects (not on separate sample machines) so texture and detail are accurate. Strikeoffs using in-stock yarns ship in 2-3 weeks, while those requiring dye runs take 3-4 weeks.



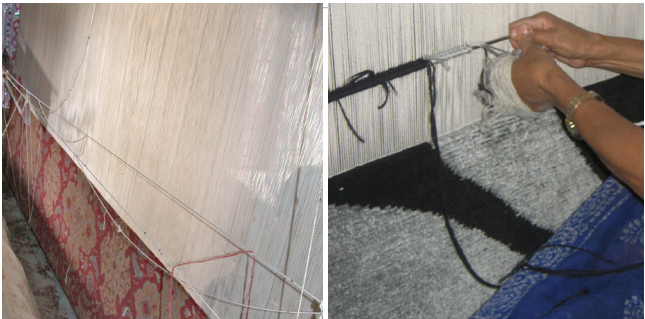
Textural Overlay A

When a tonal cut and loop pattern is added on top of a layered design, either allover or strategically, it creates textural dimension without adding cost. It is an ideal treatment for the interior field of border rugs. This ability to elevate pattern complexity while maintaining efficiency sets Delos American tufting apart.



Tip Shearing A J

A process where a shearing machine lightly cuts the tops of loop pile yarns at varying intensities that are specified by percentages. Delos offers 20%, 40%, 60%, and 80% tip shear options. This technique creates a flecked appearance that adds color and texture. Classic New Zealand Wool blended with Classic New Zealand Wool or wool blended with ECONYL® nylon flecks the best. 100% nylon shears flatter.



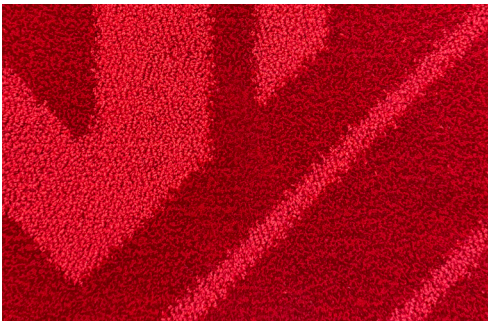
Warp and Weft J

Warp refers to the vertical foundation yarns stretched tightly on a loom. Rows of knots are tied around these warp yarns to form the pile of the rug. Weft is defined as the horizontal yarns that run across the rug's width, interlacing over and under the warp yarns. The weft secures the rows of knots in place and contributes to the rug's stability and structure.



Washing J

Only hand knotted rugs are washed, a process of up to eleven washes depending on the objective. A normal wash includes a mild chemical treatment followed by a detergent wash which helps soften the rug and eliminate impurities. Types of washes include normal, natural, antique and herbal.



Wool Nylon Blend A

Threads of Classic New Zealand Wool and nylon can be combined to create a unique blend, either in the same color or in contrasting shades. When blending the same color, subtle shade variation emerges for added character.

Pairing wool with nylon ensures durability and surface artistry. Wool offers natural shading and flecking, while nylon adds strength and resilience. Together they deliver performance and a rich aesthetic.



Achromatic Collection, Design: Peeper



DELOSTM

Custom Rugs & Carpets

TheDelosCompany.com
info@thedeloscompany.com